



ECOC Basel Booth#101



**Keysight** enables innovators to push the boundaries of engineering by quickly solving design, development, validation and emulation challenges to create the best network and data center experiences. Whether you're researching next generation technology for data transmission, design components or develop modules, Keysight can help you achieve the next speed class, if it's 800G, 1.6T or higher.

- **M8199A arbitrary waveform generator (AWG)** features four channels at 128 GSa/s or two channels at 256 GSa/s with up to 70 GHz nominal analog bandwidth.
- As a high-performance arbitrary signal source, the M8199A enables the development of designs up to 140 GBaud, including advanced components for terabit transmission systems.

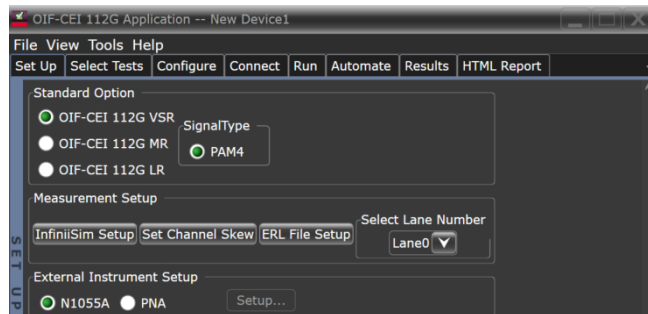


M8199A AWG



N1060A

- **N1060A 50/85 GHz Precision Waveform Analyzer (DCA)** A three-slot wide DCA-X module that integrated two 50/85 GHz electrical channels with an integrated clock recovery (CDR) and a precision timebase (PTB) to provide residual jitter as low as 45 fs for more accurate jitter measurements.



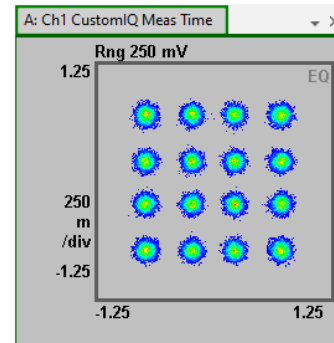
N10921CA

- **N10921CA Electrical TX Test software for OIF-CEI-112G** leverages the ultra-low noise/jitter of DCA hardware and the powerful DCA N1010A oscilloscope software, offers comprehensive PAM4 transmitter measurements outlined in OIF-CEI-112G VSR, MR and LR specifications

- **M8290A Series Optical Modulation Analyzer (OMA)** is a flexible test solution to characterize coherent transmitters and receivers for the 400ZR ecosystem.
- Production-ready OMA performs conformance Error Vector Magnitude (EVM) transmitter tests with pre-defined parameters and methodology according to OIF-400ZR-01.0 and ITU G.698.2.
- System configurations offer full parametric tests for coherent transmitter and receiver subassemblies.



M8290A OMA



- **A400GE-QDD Layer 1 BERT and KP4 FEC multiport test system** for test and validation of active cables and optical transceiver modules, including 400ZR optics.
- Efficiently view error correction performance across all 8 electrical lanes simultaneously and monitor pre-FEC error rate (BER), frame loss ratio (FLR) and system margins.
- Remote control interface and configurable test procedures to optimize the testing throughput.



A400GE-QDD

- **AresONE 400GE High-density 8-port QSFP-DD and OSFP test solutions** capable of generating up to **3.2Tbps of line-rate traffic** in a single chassis to meet ultra-high-density testing requirements.
- Validate high-scale Layer 2/3 multi-protocol devices for performance and scalability at 400/200/100/50GE speeds



AresONE 400GE

