

Orchestrating a brighter world

NEC

NEC Corporation

400G QSFP-DD

Key Features:

For DCI/Metro WDM application

Adheres to OIF 400ZR/Open ZR+

Power consumption < 20 W (target)

Operating temperature 0 to +70 deg.C.



400G CFP2-DCO

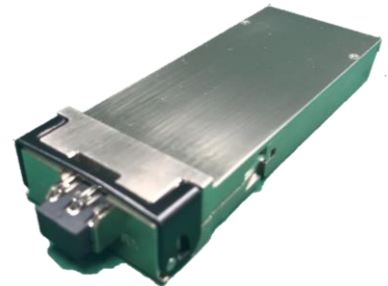
Key Features:

For DCI/Metro WDM application

Adheres to OIF 400ZR/Open ZR+/Open ROADM

Power consumption < 24 W (target)

Operating temperature 0 to +70 deg.C.



NEC Booth #4511

NEC Corporation

Fiber Optic Devices

7-1, Shiba 5-chome, Minato-ku, Tokyo 108-8001, Japan

URL: <https://www.nec.com/en/global/prod/fod/index.html>

fodd_webmast@dev.jp.nec.com



www.oiforum.com