

# Hisense

## Broadband

**Demo: CEI**

### **OSFP 800G SR8 LPO Optical Transceiver Module**

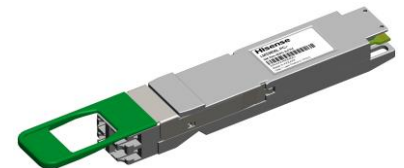
- 8 independent parallel optical channels, data rate up to 53.125GBaud
- Typical Power Consumption 4W
- Up to 30m reach with OM4 Multi-mode Fiber
- 850nm VCSEL/PD Array
- Dual MPO-12/APC Optical Receptacle Connector
- Applications: High Performance Computing Interconnect, Data Centers



OSFP 800G SR8 LPO

### **OSFP 800G 2xFR4 LPO Optical Transceiver Module**

- 2 sets of 400Gbps FR4, data rate up to 53.125GBaud per channel
- Typical Power Consumption less than 10W
- Up to 2km reach with Single Mode Fiber
- 1271/1291/1311/1331 nm EML/PD
- 2x Duplex LC Receptacle Optical Connectors
- Applications: High Performance Computing Interconnect, Data Centers



OSFP 800G 2xFR4 LPO

**Demo: 400ZR, 800ZR, OpenZR+**

### **QSFP-DD 400G ZR+ Optical Transceiver Module**

- Signal Types Supported 400GbE, 200GbE and 100GbE
- Modulation Formats DP-QPSK, DP-8QAM and DP-16QAM
- Up to 2,000km reach with Single Mode Fiber
- 7 nm coherent DSP, narrow-line tunable lasers with integrated SiPh COSA
- Dual LC/PC Receptacle Optical Connectors
- Applications: Extended Reach DCI, Metro, Long Haul & Ultra Long Haul



QSFP-DD 400G ZR+

Hisense Broadband is a global technology leader in Optical Chips, Laser Transceivers and Terminal Devices with over 20 years of experience in the Industry.

Come see us at Booth # 2029

For additional Information Please Visit our website

<https://hisensebroadband.com>



[www.oiforum.com](http://www.oiforum.com)