



OFC San Diego - Booth 5409



Keysight enables innovators to push the boundaries of engineering by quickly solving design, development, validation and emulation challenges to create the best network and data center experiences. Whether you're researching next generation technology for data transmission, design components or develop modules, Keysight can help you achieve the next speed class, if it's 800G, 1.6T or higher.

- **M8050A 120 GBd High-Performance BERT** Uncompromised signal integrity, support for NRZ, PAM4, PAM6, and PAM8 signals, and data rates up to 120 GBd.
- Flexible architecture supporting 1.6T pathfinding as well as other leading-edge technologies.
- Enables accurate characterization of receivers used in next-generation data center networks and server interfaces.

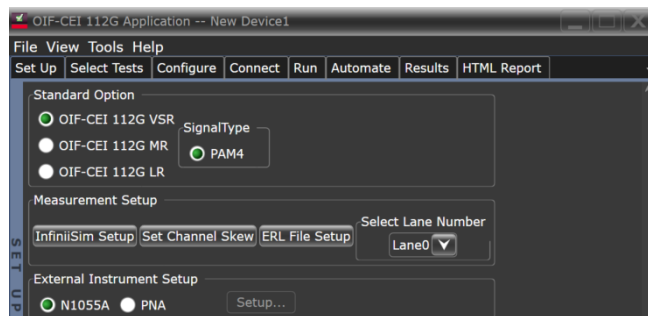


M8050A



N1000/ N1060A

- **N1060A 50/85 GHz Precision Waveform Analyzer (DCA)** A three-slot wide DCA-X module that integrated two 50/85 GHz electrical channels with an integrated clock recovery (CDR) and a precision timebase (PTB) to provide residual jitter as low as 45 fs for more accurate jitter measurements.



- **N109212CA Electrical TX Test software for OIF-CEI-112G** leverages the ultra-low noise/jitter of DCA hardware and the powerful DCA N1010A oscilloscope software, offers comprehensive PAM4 transmitter measurements outlined in OIF-CEI-112G VSR, MR and LR specifications

- **M8290A Series Optical Modulation Analyzer (OMA)** is a flexible test solution to characterize coherent transmitters and receivers for the 400ZR ecosystem.
- Production-ready OMA to perform Standard Conform EVM Transmitter test with pre-defined parameters and methodology according to OIF-400ZR-01.0 and ITU G.698.2.
- System configurations offer full parametric tests for coherent transmitter and receiver subassemblies.



M8290A OMA

- **A400GE-QDD Layer 1 BERT and KP4 FEC multiport test system** for test and validation of active cables and optical transceiver modules, including 400ZR optics.
- Intuitive graphical interface to control the module state and monitor system KPIs such pre-FEC error rate (BER), frame loss ratio (FLR), and system margin.
- Remote control interface and configurable test procedures to optimize the testing throughput



A400GE QSFP-DD800

- **AresONE 400GE High-density 8-port QSFP-DD and OSFP test solutions** capable of generating up to **3.2Tbps of line-rate traffic** in a single chassis to meet ultra-high-density testing requirements.
- Validate high-scale Layer 2/3 multi-protocol devices for performance and scalability at 400/200/100/50GE speeds



AresONE 400GE

