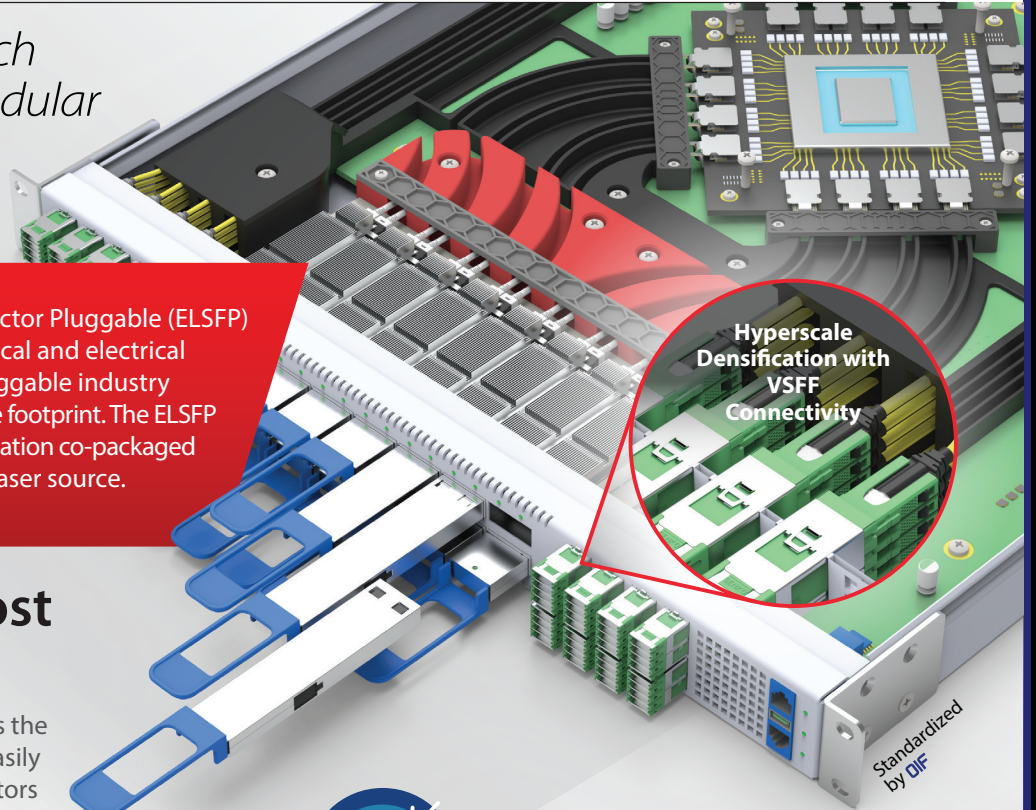


ELSFP *External Laser Small Form Factor Pluggable*

Eliminate CPO switch downtime with modular 'hot-swappable' laser sources

The External Laser Small Form-Factor Pluggable (ELSFP) is a pioneering blind-mating optical and electrical interconnect in a convenient pluggable industry recognized OSFP-RHS approximate footprint. The ELSFP is optimized to support next-generation co-packaged optics (CPO) requiring a remote laser source.



Module and Host Connectors

SENKO's innovative design allows the laser module to be quickly and easily 'blind-mated' to the host connectors mounted within the CPO switch.

MODULE CONNECTOR

HOST CONNECTOR



SENKO's **SN-MT32** Connectivity optimizes patch panel densification and enables the front panel space for the ELSFP modules.

FEATURES

- Reduced overall system thermal power density
- Fast 'plug & play' design for fast deployment
- Compact design enables maximum face-plate density
- A single ELSFP can support multiple OEs
- Hot swappable to prevent system downtime
- Eye-safe design
- Approximate OSFP-RHS envelope
- PM fiber assemblies for the interconnect between ELSFP and CPO engines

senko.com



SENKO®

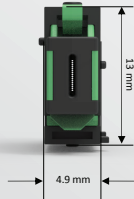
Advanced Components

SN®-MT Mini MBMC Adapter

For Onboard Interconnect

FEATURES

- 12/16/24-fiber per ferrule
- For SM and PM fiber
- 28.5 mm L x 4.9 mm W x 13 mm H
- Stackable design for multi-port applications



SN®-MT
Mini MBMC Adapter

SN®-MT
Mini MBMC Adapter
Stacked Horizontally

SN®-MT Mini MBMC
Connector

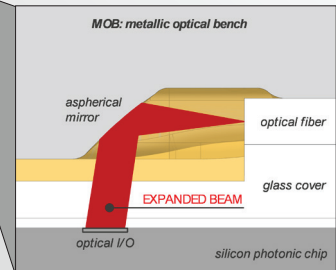
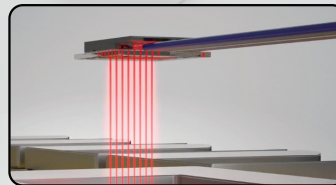
MPC Metallic PIC Connector

- Vertical coupling for silicon photonics
- Connecting fibers to laser arrays
- Connections for receiver arrays
- Beam expansion
- Thermal stability
- Reflowable design
- Low profile
- Mirrors are a customizable optical design

stamped aluminum
groove array

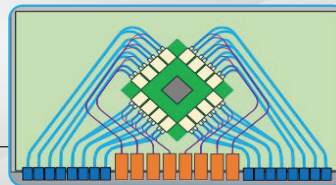
thermally-stable
frame
mirror array

Metallic PIC 20CH
127µm pitch

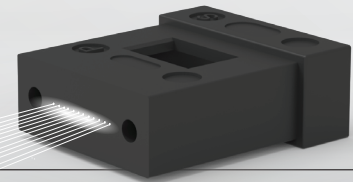
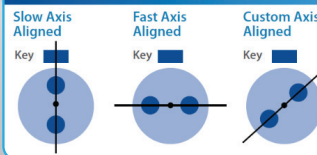


Fiber Assemblies

- Single mode fiber assemblies for fiber routing between faceplate and CPO engines
- Multiple fiber counts available to support both FR and DR types of optics
- PM fiber assemblies for the interconnect between ELSFP and CPO engines



Alignment Example



MT Ferrules

MT ferrule assemblies with PM fibers meeting ELSFP requirements

Scan the QR code to learn more



senko.com

www.oiforum.com