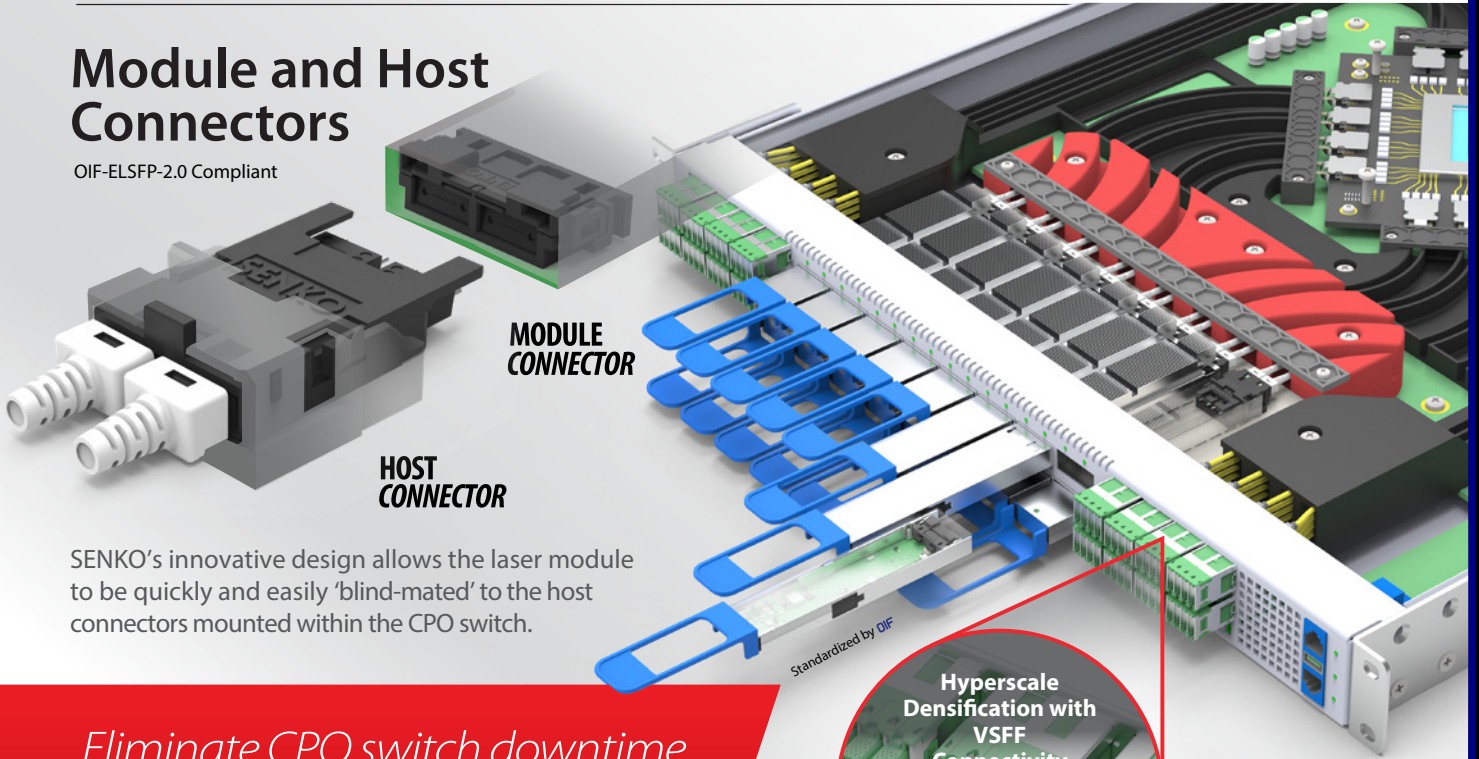


ELSFP *External Laser Small Form Factor Pluggable*

Module and Host Connectors

OIF-ELSFP-2.0 Compliant



SENKO's innovative design allows the laser module to be quickly and easily 'blind-mated' to the host connectors mounted within the CPO switch.

Eliminate CPO switch downtime with modular 'hot-swappable' laser sources



SENKO's **SN-MT** connectivity optimized patch panel densification and enables the front panel space for the ELSFP modules.

Smart Cleaner[™]
ELSFP

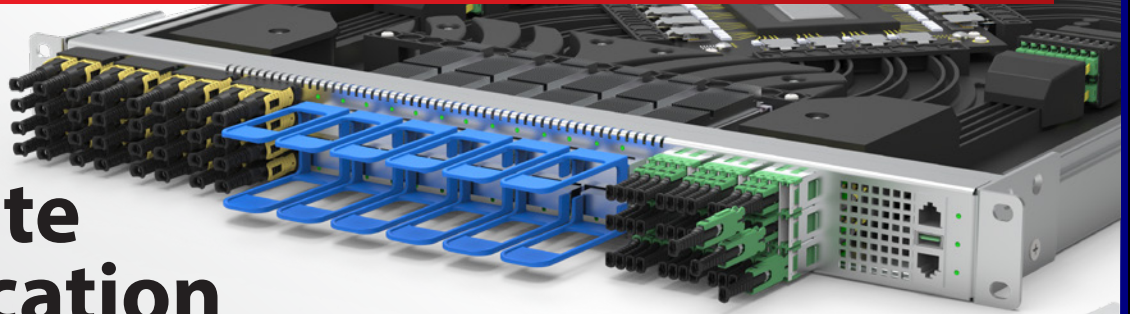


Cleaning & Inspection

senko.com

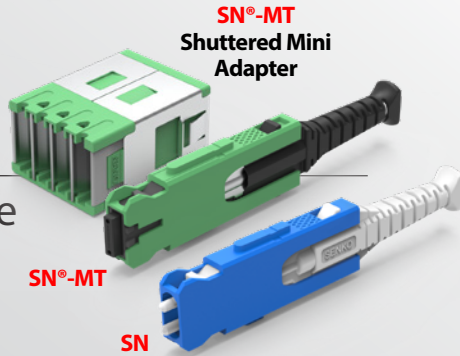


Faceplate Densification



SN® and SN-MT®

For Hyperscale Data Centers



SN-MT Mini MBMC Adapter

FEATURES

- 12/16/24-fiber per ferrule
- For SM and PM fiber
- 28.5 mm L x 4.9 mm W x 13 mm H
- Stackable design for multi-port applications

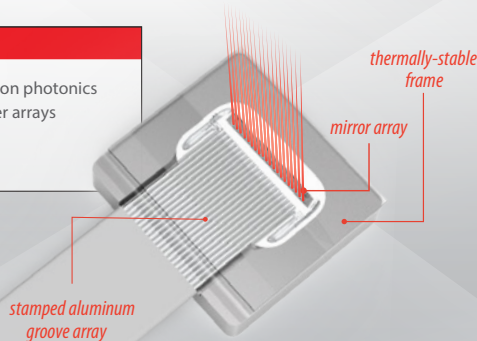
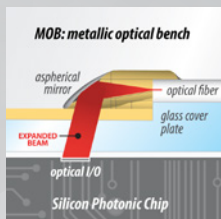
For Onboard Interconnect



MPC Metallic PIC Coupler

FEATURES

- Vertical coupling for silicon photonics
- Connecting fibers to laser arrays
- Beam expansion
- Thermal stability



Metallic PIC 20CH
127µm pitch

MPO-PLUS® EZ-WAY™

FEATURES

- Compatible with dual MPO transceivers
- Fortified soft spring design
- Industry leading IL 0.25dB
- Reduced footprint for perfect fit

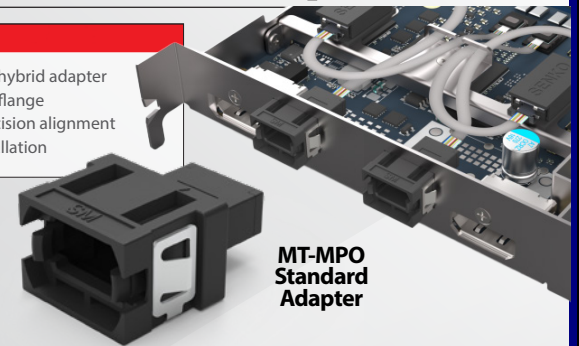


Tailored for Dual 800G Transceivers

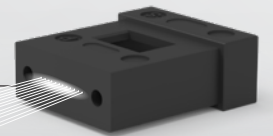
MT-MPO Adapter

FEATURES

- MT-MPO hybrid adapter
- Reduced flange
- High precision alignment
- Easy installation

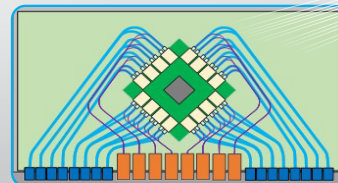


Fiber Assemblies

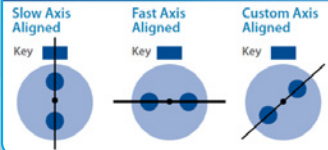


MT Ferrules

MT ferrule assemblies with PM fibers meeting ELSFP requirements



Alignment Example



Scan the QR code to learn more

