



Accelink products at OIF booth

- 1.6T OSFP224 2xDR4
- External Laser Small Form-Factor Pluggable (ELSFP) module
- Linear Pluggable Optics (LPO) modules
 - OSFP112 800G DR8 (LPO & RTLRL (LRO))
- 400ZR(+) and 800ZR
- Optical Line System

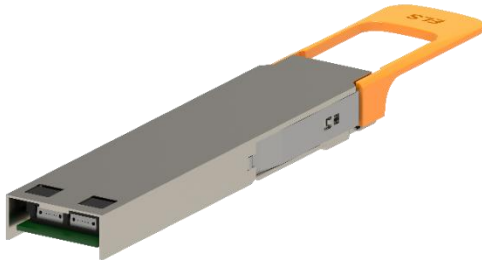
1.6T OSFP 2xDR4 at CEI-224 Section



Data rate (Total)	1.6 Tb/s
Data rate (Per Lane)	224Gb/s
Distance	500m
Case Temperature	0~70 °C
Transmitter/Receiver	SiP/PIN
Wavelength	1310nm
Optical Connector	Dual MPO-12

ELSFP/LPO/RTLRL (LRO) at EEI Section

ELSFP UHP 23dBm



Laser power	UHP 23dBm
Laser wavelength	8x 1310nm
Power Consumption	≤20W

800G OSFP DR8 LPO/LRO



Data rate	800 Gb/s (112G/lane)
Distance	500m
Case Temperature	0~70 °C
Transmitter/Receiver	SiP/PIN
Wavelength	1310nm
Power Consumption	≤7.5W (LPO) ≤9.5W (RTLRL/LRO)
Optical Connector	Dual MPO-12 / MPO-16



400ZR & 800ZR

400G QSFP-DD ZR+



400G QSFP-DD ZR+HP



800G OSFP ZR DCO



Spec	400G QSFP-DD ZR+	400G QSFP-DD ZR+ HP	800G OSFP ZR DCO
Data rate	400Gb/s	400Gb/s	800Gb/s
Distance	450km (400Gb/s rate)	450km (400Gb/s rate)	1000km
Case Temperature	0~70°C	0~70°C	0~70 °C
Transmitter/Receiver	Nano-ITLA/ICR	Nano-ITLA/ICR	Nano-ITLA/ICR
Frequency	191.3~196.1THz	191.3~196.1THz	191.3~196.1THz
Optical Connector	Duplex LC	Duplex LC	Duplex LC
B2B ROSNR	25.5dB@400ZR 23dB@400ZR+	25.5dB@400ZR 23dB@400ZR+	26dB@800ZR 25.5dB@FlexO-8e
Tx Output Power	-13~-9dBm	-13~+3dBm tunable	-11~0dBm tunable
Power consumption	≤21W (400ZR+) ≤18W(400ZR)	≤25W(400ZR+) ≤21W (400ZR)	≤29.5W (worst case)
IB Tx OSNR	\	36dB	40dB
OOB Tx OSNR	\	43dB	37dB

Optical Line System

OA card for white box



Flexgrid Mux card for white box OLS



Fixgrid Mux/DeMux



C-/L-Band OA card	C-/L-Band Flexgrid Mux/DeMux	150G FixGrid Mux/DeMux
<ul style="list-style-type: none"> ● 23dBm Output power/Band ● 15~25/22~34dB switchable gain ● NF<5.0dB @ 25dB for Cband ● NF<6.0dB @ 25dB for Lband ● VOA with 0~30dB dynamic range ● Field Cband+Lband extendibility ● Embedded bi-directional 120km OTDR for real-time fiber monitoring ● Embedded optical spectrum monitoring ● 100M OSC channel for 0~120km 	<ul style="list-style-type: none"> ● 32 ports flexgrid mux/demux with WSS (wavelength selected switch) ● 6.25G spectrum slot size ● 0~15dB attenuation dynamic range ● 32+32 ports field extendibility ● Port Tx/Rx real-time optical power monitoring ● IL <9dB ● Port isolation>20dB ● 3dB BW>142G @ 150G channel ● 0.5dB BW>132G @ 150G channel 	<ul style="list-style-type: none"> ● 32 ports fixgrid mux/demux with AWG (wavelength selected switch) w/ 150G grid ● IL<5.5dB ● 3dB BW>150G ● 0.5dB BW>90G ● Adjacent channel isolation>15dB @ center wavelength ● Non-Adjacent channel isolation>30dB @ center wavelength

